

Product guide

Step by Step



Tutorial

Liquid Mask

While building the model of an aircraft, it is common to have problems with masking certain previously painted areas. Following are a few suggestions.

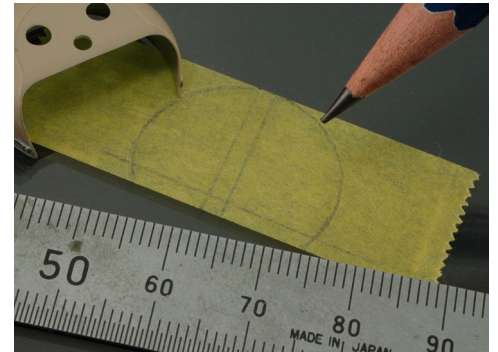
By Pieza a Pieza Modelling Workshop



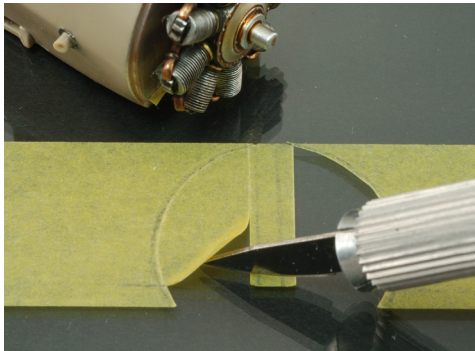
1 Once the fuselage has been finished, the most common part which needs to be masked is the cockpit, and for a start, this is filled with small pieces of paper.



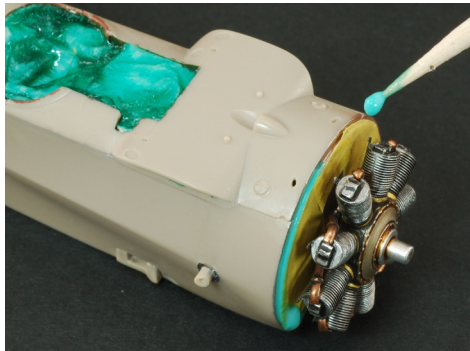
2 Once the empty space has been filled with the compacted paper, some drops of Vallejo Liquid Mask 70.523 are applied to the surface of the paper.



3 However, in the case of an engine or another external surface, the part which needs protection is first outlined with Vallejo masking tape.



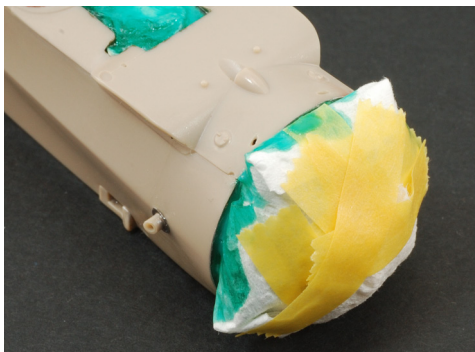
4 The masking tape is cut to the design with a cutter, and applied to the surface in sections, in accordance with the construct.



5 Finally, the perimeter of the area is sealed again with Liquid Mask, 70.523.



6 Again, pieces of paper are glued along the outline with Liquid Mask.



7 The parts of the model which are to be preserved are protected with paper and sealed with Vallejo Masking Tape.



8 Another option is to cover different areas with masking tape, cut to size with a sharp-pointed cutter.



9 The entire perimeter and the possible fissures or cracks of the model are sealed efficiently with Vallejo Liquid Mask, 70.523.