

# Product guide

## Step by Step



### Tutorial

## Plastic Putty

Plastic Putty is an acrylic white paste available in 20 ml. tube and 17 ml. bottle. It can be thinned with water to achieve a wide range of consistencies, effects, textures, and mixed with acrylic paints, washes or pigments.

By José Brito



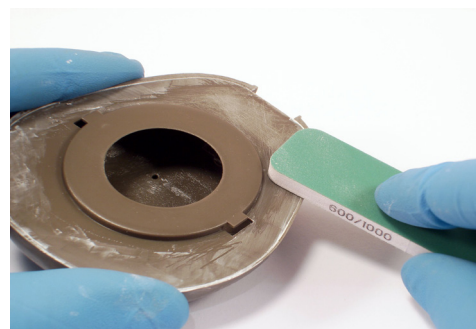
### Filling holes



**1** Filling gaps between kit parts is extremely easy. All we have to do is apply the putty directly over the gap. The adhesive properties are perfect and soon the gap is closed.

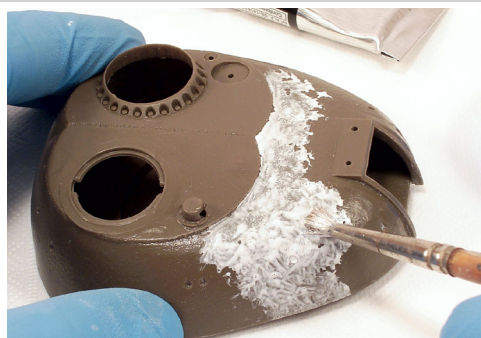


**2** We can add some water to thin the putty and reach the most hidden and recessed spots. All we have to do is thin the putty and let it flow by capillarity.

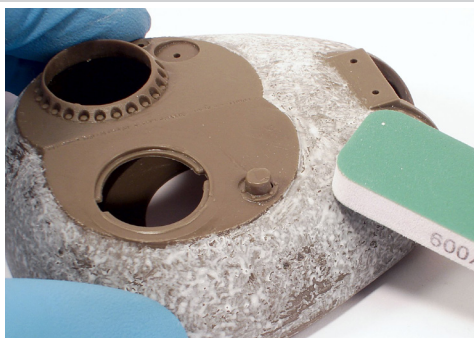


**3** Let it dry for about 30 minutes and then we can sand it and carve it.

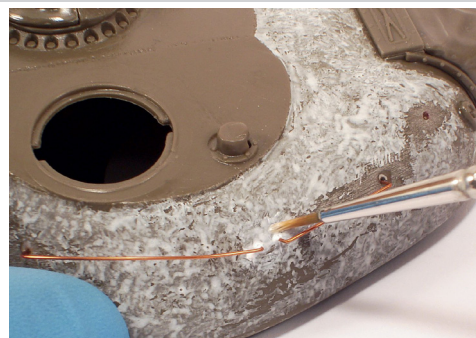
### Cast texture



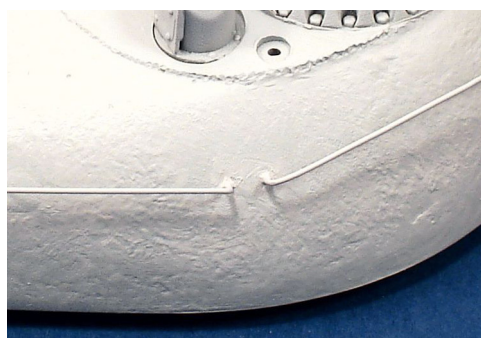
**1** Cast textures, like the ones from tank turrets, are easily achieved. Just add some water to Plastic Putty and apply it, randomly, with the help of a flat brush.



**2** As usual, the putty can be sanded and the excess removed.



**3** The holes must be filled, so apply Plastic Putty directly into the holes. With a brush slightly moistened in water, we start spreading the putty and fill all the open spots. Grab handles were also added in metal.



**4** Once primed, the cast effect looks amazing, accurate and into scale.



**5** The turret previously shown and after painting/ weathering (burn effects). As it can be seen in this picture, the cast texture is totally visible and really improves our turret final look.



**6** The same putty, with less water or applied directly from the tube, is also great to add dirt texture on the underside of a vehicle. At this stage, we can also add paint to the putty and achieve a convincing dirty look.